

Celebrate the landscape with Wayne Art Center in *Back to Nature 2021* an invitational exhibition featuring the work of twenty-one regional painters in our Davenport Gallery and online through June 26.

Back to Nature 2021 A Landscape Painter's Invitational

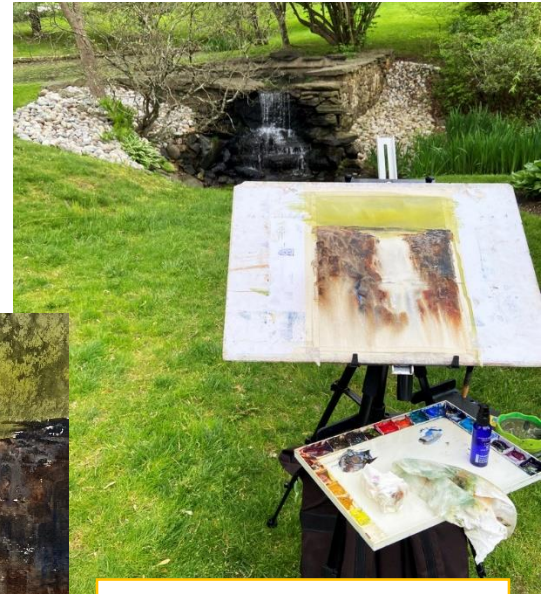
Join us in-gallery to explore technique with painters **Mick McAndrews** and **Beth Bathe** as they share their processes as landscape painters and offer instruction about their mediums in live-demos at WAC.

Sophisticated Simplicity in Watercolor with **Mick McAndrews**

Thursday, June 17 1-3pm

Davenport Gallery

This not to be missed watercolor demonstration focuses on working with plenty of water and pigment to exploit the wonder and intrinsic beauty of the watercolor medium. Learn how to avoid the pitfalls of noodling with fussy details and focus on the importance of good design including interesting shapes, value contrast and edge variety. Explore and experience the “magic” that makes watercolor so distinctive with Mick McAndrews.



Bridal Falls at Appleford by Mick McAndrews



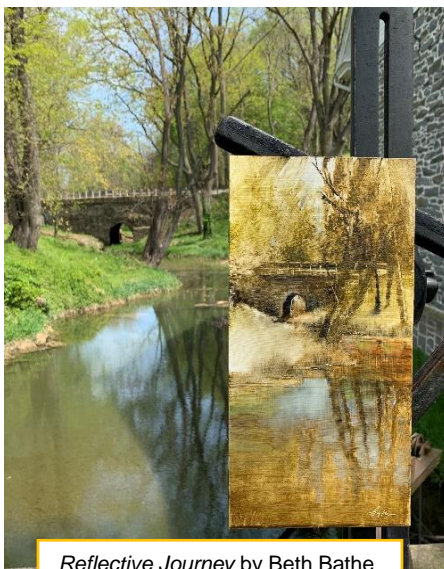
Evoking Nostalgia in Oil

with **Beth Bathe**

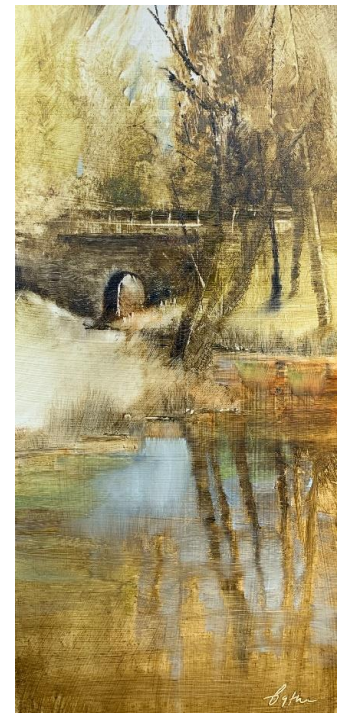
Thursday, June 24 1-3pm

Davenport Gallery

Beth Bathe's painting style is unique, looking somewhat like a watercolor- or is it an oil painting? Join us to see how Beth uses water mixable oil paints in thin washes with a limited tonalist palette, using unconventional tools such as squeegees & cotton swabs along with her brushes. Her representational paintings have been described by critics as evoking nostalgia, like that of an old sepia toned photograph, often with just touches of color.



Reflective Journey by Beth Bathe



Registration is available online with Wayne Art Center [HERE](#).

Demos may be attended for \$20 each. Mask wearing and social distancing will be observed.

 **wayne art center**