

# CRAFTFORMS 2023

28th International Juried Exhibition of Contemporary Fine Craft

FOR IMMEDIATE RELEASE

Contact Shawn Bellwoar

[shawn@wayneart.org](mailto:shawn@wayneart.org)

R610-688-3553

## Wayne Art Center Announces 28<sup>th</sup> Annual *CraftForms* Exhibition

**WAYNE, PA** – December 6, 2023 –Wayne Art Center is pleased to announce the opening of *CraftForms* 2023, one of the premier contemporary craft exhibitions in the country. Now in its 28<sup>th</sup> year, the international juried exhibition, along with this year's companion show, *InGrained, An Exhibition of Pennsylvania Furniture, Sculpture and Woodturning* and *Attraction to Abstraction*, Wayne Art Center's annual juried exhibition of large abstract works, will be on view through January 20, 2024.



Dedicated to enhancing the public's awareness of fine contemporary craft since 1994, *CraftForms* has evolved from a modest exhibition of local craft artists to a broadly recognized exhibition that draws talent from all over the world. This year, Wayne Art Center was delighted to welcome juror Jean McLaughlin. The former Director of Penland School of Craft, McLaughlin is a life-long advocate for artists and is currently working as a curator, consultant, and writer. From this year's entries, submitted by nearly 500 artists from 40 states and seven countries, McLaughlin selected 95 exquisitely executed works in ceramics, fiber, glass, wearable art, metal, mixed media, jewelry, wood, and 3D technology. "The artists chosen for this exhibition are skillful craftspeople who use their hands to move material into forms that fill us, as

viewers, with a pervasive sense of wonder,” said McLaughlin. “Most interesting to me is how these works speak to me about “time.” There is the time each artist spent in conceiving and then making the piece, but there is also how each piece causes time to stand still for me.”



On Friday, December 1, McLaughlin presented \$10,000 in awards at the *CraftForms* Preview Party to a lively crowd of artists and craft enthusiasts. Over 150 guests attended the festive event, featuring live music, a martini ice luge shaped like an elephant (one of the art pieces on display), and delicious food by Catering By Design. “CraftForms would not be possible without the support of our local businesses and patrons,” said Wayne Art Center’s Executive Director Nancy Campbell. “Through the generosity of many, we can raise the funds necessary to support our ongoing slate of exhibitions, outreach and educational programs which benefit all members of our community.”



This year’s companion show is *InGrained, An Exhibition of Pennsylvania Furniture, Sculpture and Woodturning*. Located in the Ethel Sergeant Clark Smith Gallery, the exhibition showcases the works of 24

exceptional Pennsylvania artists, including loaned works by master craftsmen Wharton Esherick and George Nakashima. Curator Mark Sfirri is a highly regarded furniture maker, wood sculptor, and the former Director of Bucks County Community College's Fine Woodworking Program.



James McNabb, *City Wheel II*

Also on display is *Attraction to Abstraction*, Wayne Art Center's annual juried exhibition of large abstract works. Juror Marianne Mitchell has shown works nationally and internationally and is currently on the faculty at Wayne Art Center.



Heidi Hendrickson, *Raise Your Hand If You've Been Here Before*

Wayne Art Center is a non-profit organization dedicated to enriching our community through the arts. Since its founding in 1931, Wayne Art Center has established itself as a vital cultural resource, offering arts education, exhibitions, outreach programs and special events. Wayne Art Center remains steadfast in its mission to afford artists and the broader community an interdisciplinary venue to explore, share and learn, while fostering a sense of community for arts education and appreciation.

Wayne Art Center is located at 413 Maplewood Avenue in Wayne, Pennsylvania. Gallery hours are Monday through Friday, 10 am-5 pm and Saturday, 10 am – 4 pm. For more information, visit [craftforms.org](http://craftforms.org) or call 610-688-3553.

### *CraftForms 2023 Winners*

Best in Show

Juror's Award for Fiber

Juror's Award for Ceramics

Juror's Award for Glass

Juror's Award for Metal

Juror's Award for Wood

Juror's Award

Patty Kennedy-Zafred

Rima Day

Jing Huang

Tali Grinshpan

John Rais

Martha Collins

Lynn Sures

*Spirits Remembered*

*Concealed Desire II*

*Loop #8*

*Beloved Memories*

*Mondo Cane*

*Chartres Anemone*

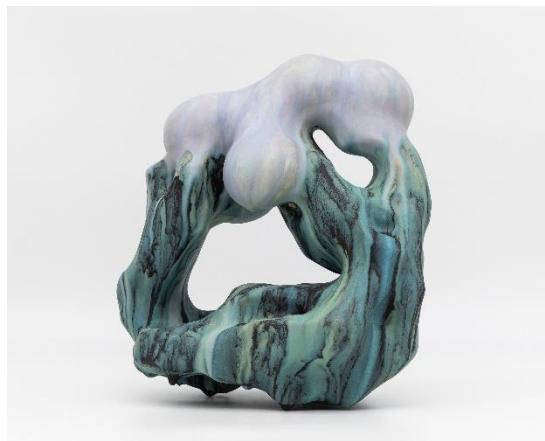
*Printed Through Space & Time*



Patty Kennedy-Zafred *Spirits Remembered*



Rima Day, *Concealed Desire II*



Jing Huang, *Loop #8*



Tali Grinshpan, *Beloved Memories*



John Rais, *Mondo Cane*



Martha Collins, *Chartres Anemone*



Lynn Sures, *Printed Through Time and Space*

## CraftForms 2023 Schedule of Events

### Holiday Shopping Weekend

Shop local with over 30 craft and culinary artisans.

**Friday, December 8, 4-7 pm**

**Saturday, December 9, 10 am-5 pm**

**Sunday, December 10, 11 am-4 pm**

### Mira Nakashima Lecture

**Wednesday, December 13, 5:30-7 pm**

Join architect and furniture maker Mira Nakashima as she discusses the legacy of her father, master craftsman George Nakashima. Tickets for sale at [craftforms.org](https://craftforms.org).

### Woodturning Demo with Janine Wang

**Saturday, January 6, 2024, 1-2:30 pm**

This demonstration will cover the essentials of woodturning between centers and how simple turned pieces are combined to create larger constructions. Tickets for sale at [craftforms.org](https://craftforms.org).

### Mark Sfirri & Miriam Carpenter Lecture

**Wednesday, January 10, 2024 5:30-7 pm**

Mark Sfirri will discuss his thought process for curating *InGrained: Furniture, Sculpture, and Woodturning by Pennsylvania Artists*. Miriam Carpenter will discuss the creative process of her latest works. Tickets for sale at [craftforms.org](https://craftforms.org).

### Patron Wine Pairing Dinner

**Thursday, January 18, 2024 6-8 pm**

Enjoy a four-course sit-down dinner prepared by Catering by Design with sommelier wine pairing. Tickets for sale at [craftforms.org](https://craftforms.org).